

I n d u s t r i e s P t y . L t d .

ACN: 605471047

ABN: 75605471047



# INSTALLATION GUIDE

for

35mm door thickness

Standardized door bores:

(25.4mm – side bore), and

(54mm – face bore).

By Thuan Nguyen

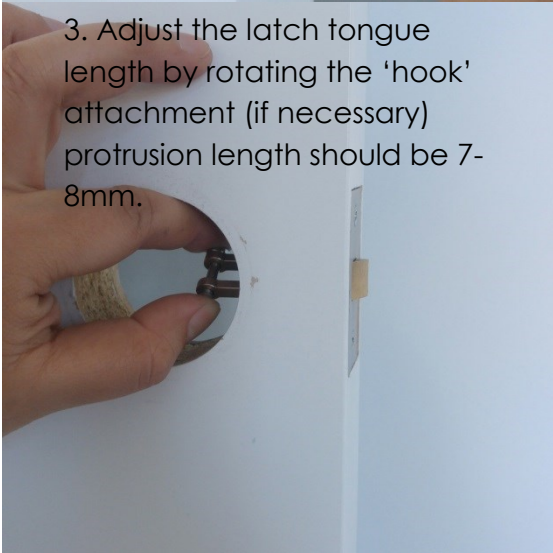
1. Install the door strike



2. Install the latch tongue faceplate unit



3. Adjust the latch tongue length by rotating the 'hook' attachment (if necessary) protrusion length should be 7-8mm.



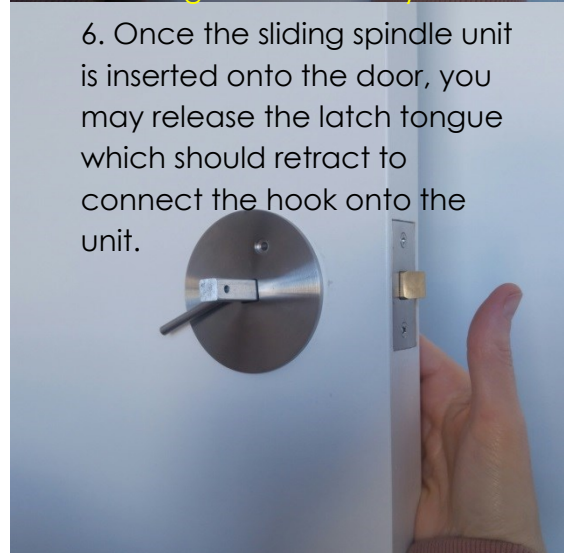
4. latch tongue unit should look like this once installed



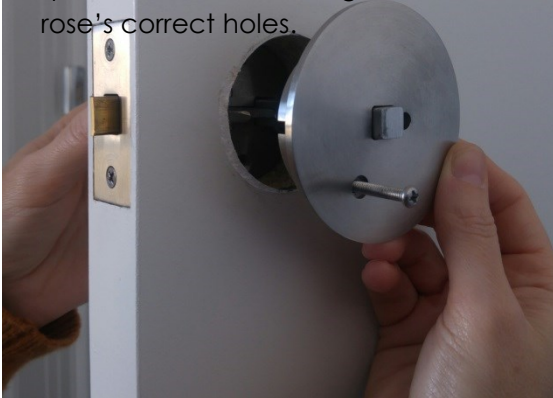
5. Now install the sliding spindle unit **onto the side** where the **door opens** when you **pull it**.



6. Once the sliding spindle unit is inserted onto the door, you may release the latch tongue which should retract to connect the hook onto the unit.



7. Now attach the remaining rose onto the other side whilst holding the other unit in place. Ensure that the spindle and lock rod aligns into the rose's correct holes.



8. Now screw in the first securing bolt (M4 35mm)



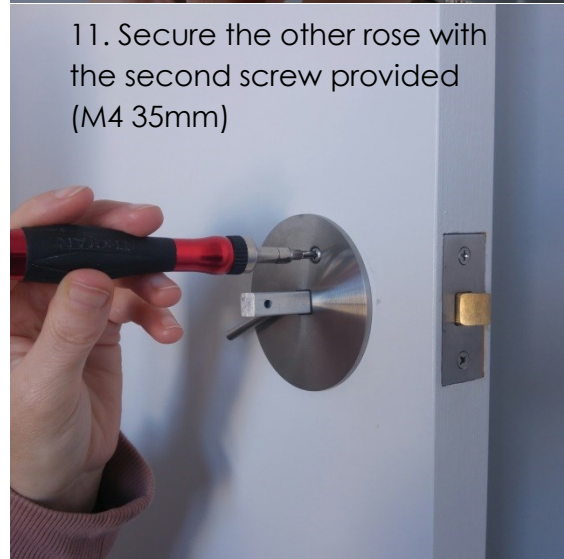
9. You may now attach the handle



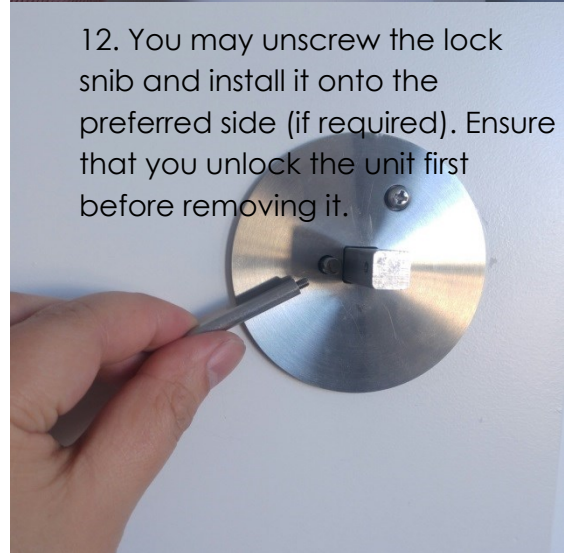
10. Ensure you secure the handle with the screw provided (M4 15mm)



11. Secure the other rose with the second screw provided (M4 35mm)



12. You may unscrew the lock snib and install it onto the preferred side (if required). Ensure that you unlock the unit first before removing it.



13. Install the second handle and complete the installation.



In an emergency, a locked handle can be opened from the other side.

